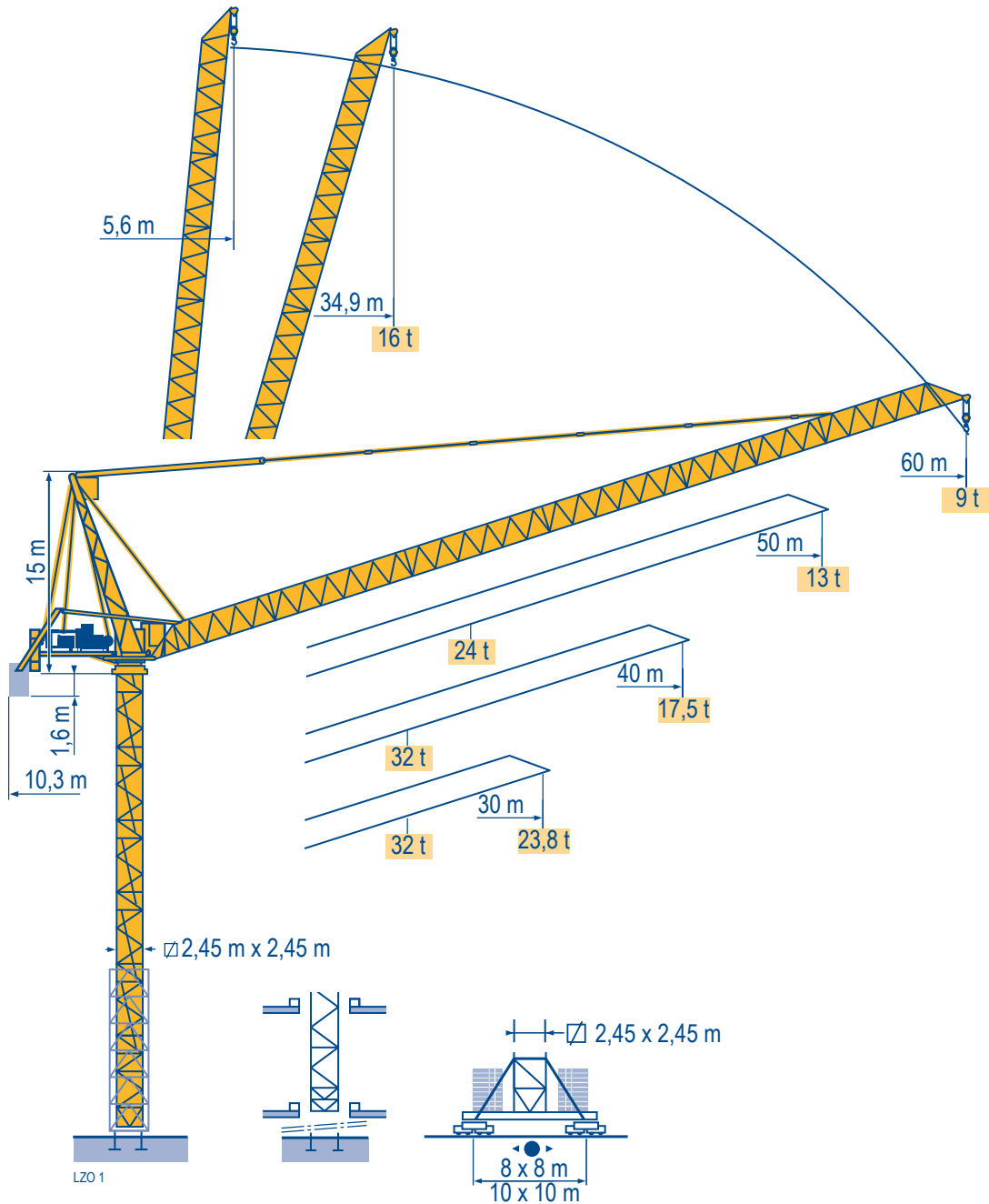
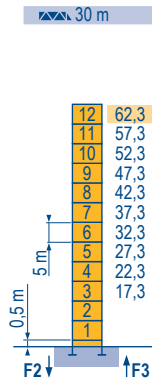


MR 605 B H32



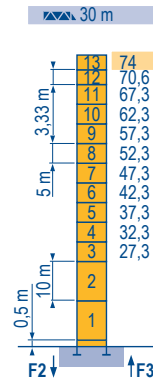
Mat / Réactions \square 2,45 m
 Maste /
 Eckdrücke 30 m \Rightarrow 60 m
 Masts /
 Reactions
 Mástil /
 Reacciones
 Torre / Reazioni
 Tramo /
 Reacções

L202



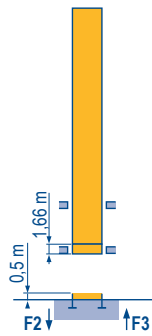
	H (m)	5 m	3,33 m
40 - 50 m	59	10	2
60 m	60,6	11	1

P 800 A
 F2 ● 289 t
 ■ 351 t
 F3 ● 199 t
 ■ 259 t
 ▲ 122 t



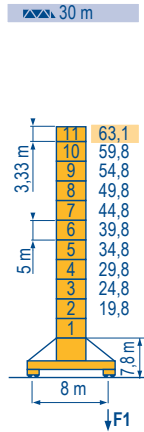
	H (m)	10 m	5 m	3,33 m
40 - 50 - 60 m	72,3	2	10	-

P 850 A
 F2 ● 324 t
 ■ 490 t
 F3 ● 228 t
 ■ 392 t
 ▲ 134 t



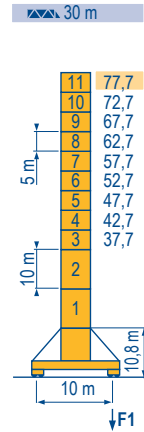
B 800 B
 i

30 m \Rightarrow 60 m



	H (m)	5 m	3,33 m
40 - 50 m	58,1	9	1
60 m	61,4	9	2

Y 800 A
 F1 ● 195 t
 ■ 182 t
 ▲ 158 t



	H (m)	10 m	5 m	3,33 m
40 - 50 m	74,4	2	7	2
60 m	76,1	2	8	1

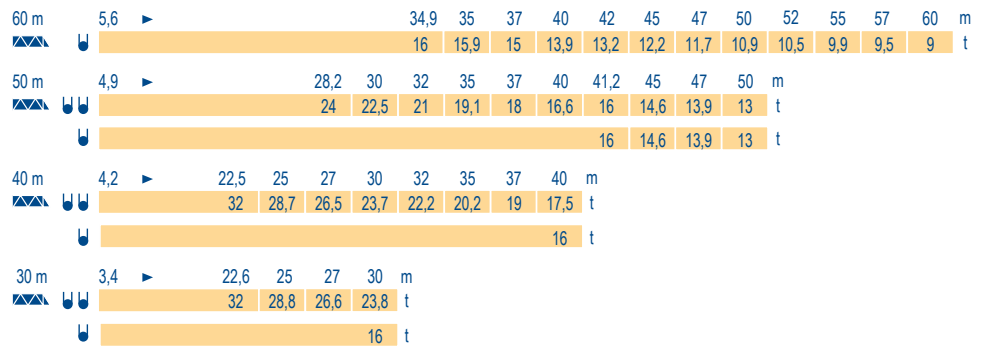
J 850 A
 F1 ● 178 t
 ■ 226 t
 ▲ 185 t

MR 605 B H32



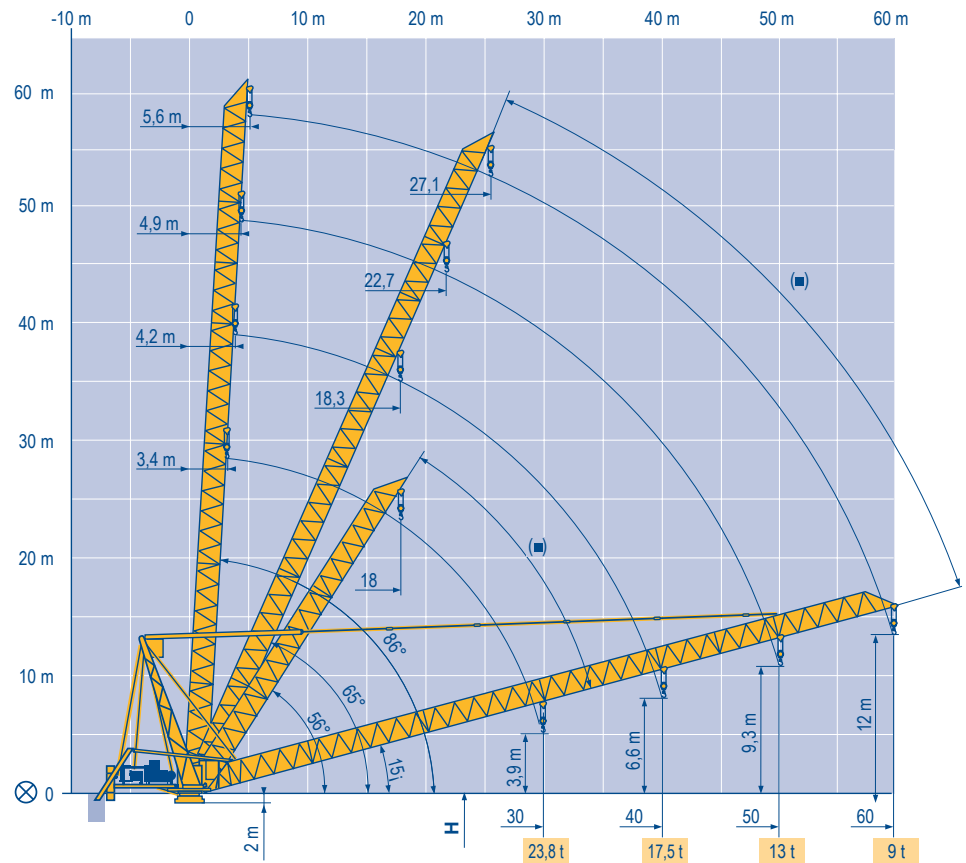
F	D	GB	E	I	P
● Réactions en service ■ Réactions hors service ▲ A vide sans lest (ni train de transport) avec flèche et hauteur maximum.	● Reaktionskräfte in Betrieb ■ Reaktionskräfte außer Betrieb ▲ Ohne Last, Ballast (und Transportachse), mit Maximalausleger und Maximalhöhe.	● Reactions in service ■ Reactions out of service ▲ Without load, ballast (or transport axles), with maximum jib and maximum height.	● Reacciones en servicio ■ Reacciones fuera de servicio ▲ Sin carga, sin lastre, (ni tren de transporte), flecha y altura máxima.	● Reazioni in servizio ■ Reazioni fuori servizio ▲ A vuoto, senza zavorra (ne assali di trasporto) con braccio massimo e altezza massima.	● Reacções em serviço ■ Reacções fora de serviço ▲ Sem carga (nem trem de transporte)- sem lastro com lança e altura máximas.
i Nous consulter	i Auf Anfrage	i Consult us	i Consultarnos	i Consultateci	i Consultar-nos

Courbes de charges
 Lastkurven
 Load diagrams
 Curvas de cargas
 Curve di carico
 Curva de cargas



LZ01

Flèche relevée
 Ausleger in Steilstellung
 Luffing jib
 Flecha izada
 Braccio impennato
 Lança inclinada



MR 605 B H32

POTAIN



F
 Axe articulation flèche
 Position girouette

D
 Ausleger-gelenkachse
 Windfreistellung

GB
 Jib hinge shaft
 Weathervaning position

E
 Eje articulación de flecha
 Posición eleta

I
 Asse cerniera braccio
 Libera rotazione

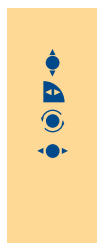
P
 Eixo de articulação da lança
 Posição em catavento

Mécanismes
Antriebe
Mechanisms
Meccanismi
Mecanismos

LZO 2

MR 605 B H32 50 Hz											ch - PS hp	kW		
	180 LBR 80 L 1090	m/min t	3,8/38 16	6/60 10,1	9,5/95 5,9	15,2/152 3,25	1,9/19 32	3/30 20,2	4,75/47,5 11,8	7,6/76 6,5	180	132	1090 m	
	90 VBR		3 min 17 s									90	66	
	R - 13,2	tr/min U/min rpm	0 → 0,67									3 x 6	3 x 4,4	
	Y 800 A J 850 A	m/min												
CEI 38			IEC 38				kVA							
400 V (+6% -10%) 50 Hz			270 kVA											

MR 605 B H32 60 Hz											ch - PS hp	kW		
	215 LBR 80 L 1090	m/min t	4,6/46 16	7,2/72 10,1	11,4/114 5,9	18,2/182 3,25	2,3/23 32	3,6/36 20,2	5,7/57 11,8	9,1/91 6,5	215	158	1090 m	
	108 VBR		2 min 44 s									108	79	
	R - 15,8	tr/min U/min rpm	0 → 0,8									3 x 7,2	3 x 5,3	
	Y 800 A J 850 A	m/min												
CEI 38			IEC 38				kVA							
480 V (+6% -10%) 60 Hz			325 kVA											



F	D	GB	E	I	P
Levage Relevage Orientation Translation	Heben Ausleger-Einziehen Schwenken Kranfahren	Hoisting Luffing Slewing Travelling	Elevación Elevación de flecha Orientación Traslación	Sollevamento Brandeggio Rotazione Traslazione	Elevação Inclinação da lança Rotação Translação

Document commercial non contractuel. Pour toute information technique se référer à la notice correspondante. Unverbindliches Vertriebsdokument. Für technische Informationen, siehe die entsprechenden Anweisungen. This commercial document is not legally binding. For any technical information, please refer to the corresponding instructions. Documento comercial non contractuel. Para cualquier información técnica, ver la noticia correspondiente. Documento commerciale non vincolante, per tutte le informazioni tecniche fare riferimento al catalogo istruzioni. Documento comercial não contractual. Para qualquer informação técnica complementar consultar as respectivas instruções.



Manitowoc
Crane CARE

Americas
Tel : +1 888 479 7278
Tel : +1 717 593 2000

Europe – Middle East – Africa
Tel : +33 (0) 4 72 81 50 00
Tel : +44 (0) 191 522 2000

Asia – Pacific
Tel : +65 6264 1188
Fax : +65 6862 4040

www.manitowoccrane.com

POTAIN

Manitowoc Crane Group

**18, rue de Charbonnières - B.R.173
69132 ECULLY Cedex - France**

Tél. : +33 (0) 4 72 18 20 20
Fax. : +33 (0) 4 72 18 20 00
www.manitowoccrane.com

MR 605 B H32
Code E-89985-01_Réf. 2003 48 LZO 4

Copyright.Reproduction interdite © POTAIN 2003

Réalisation Secdoc